

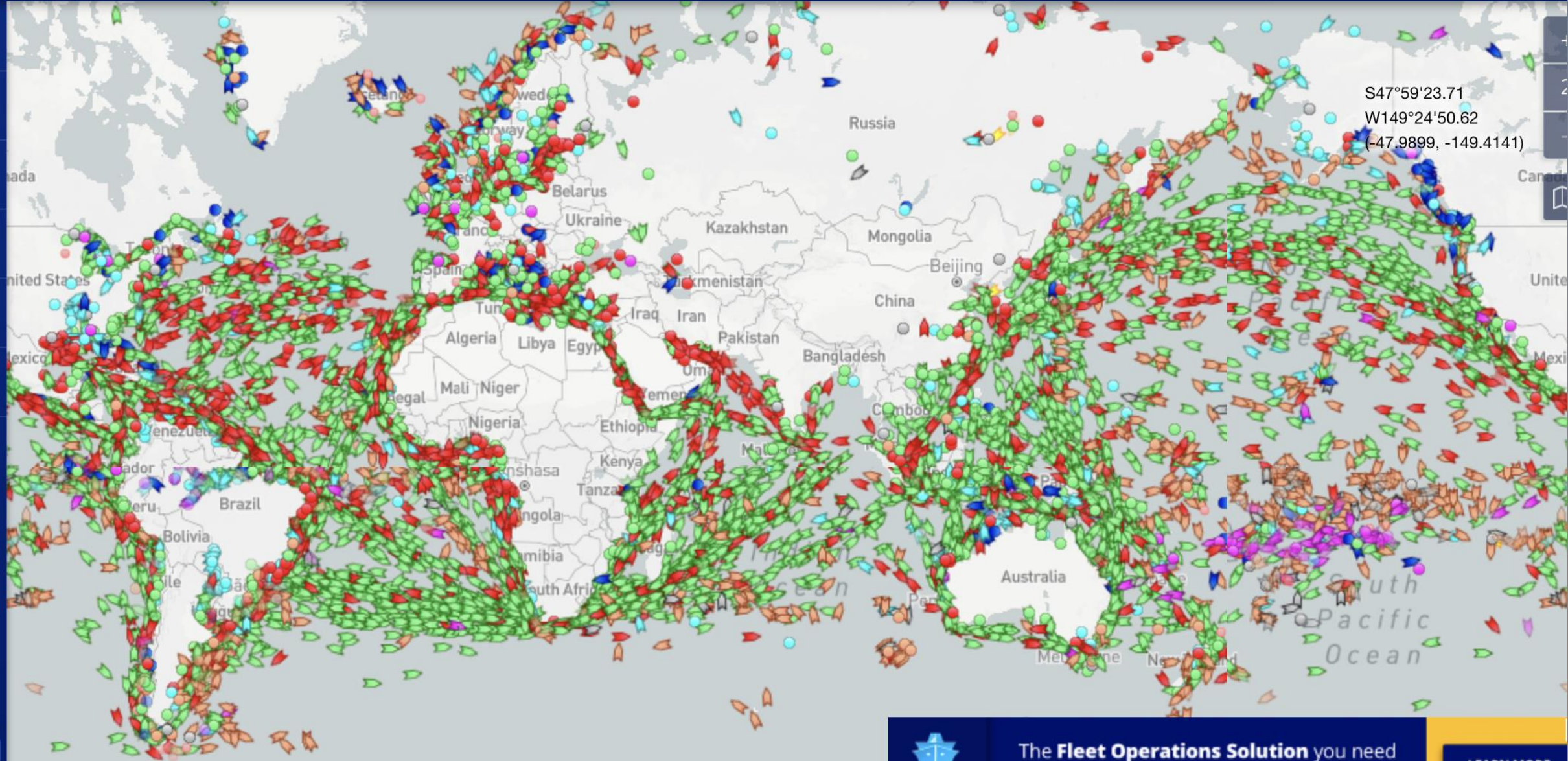
Australia & PNG Region

Vision of stability and growth




Caring for seafarers
around the world



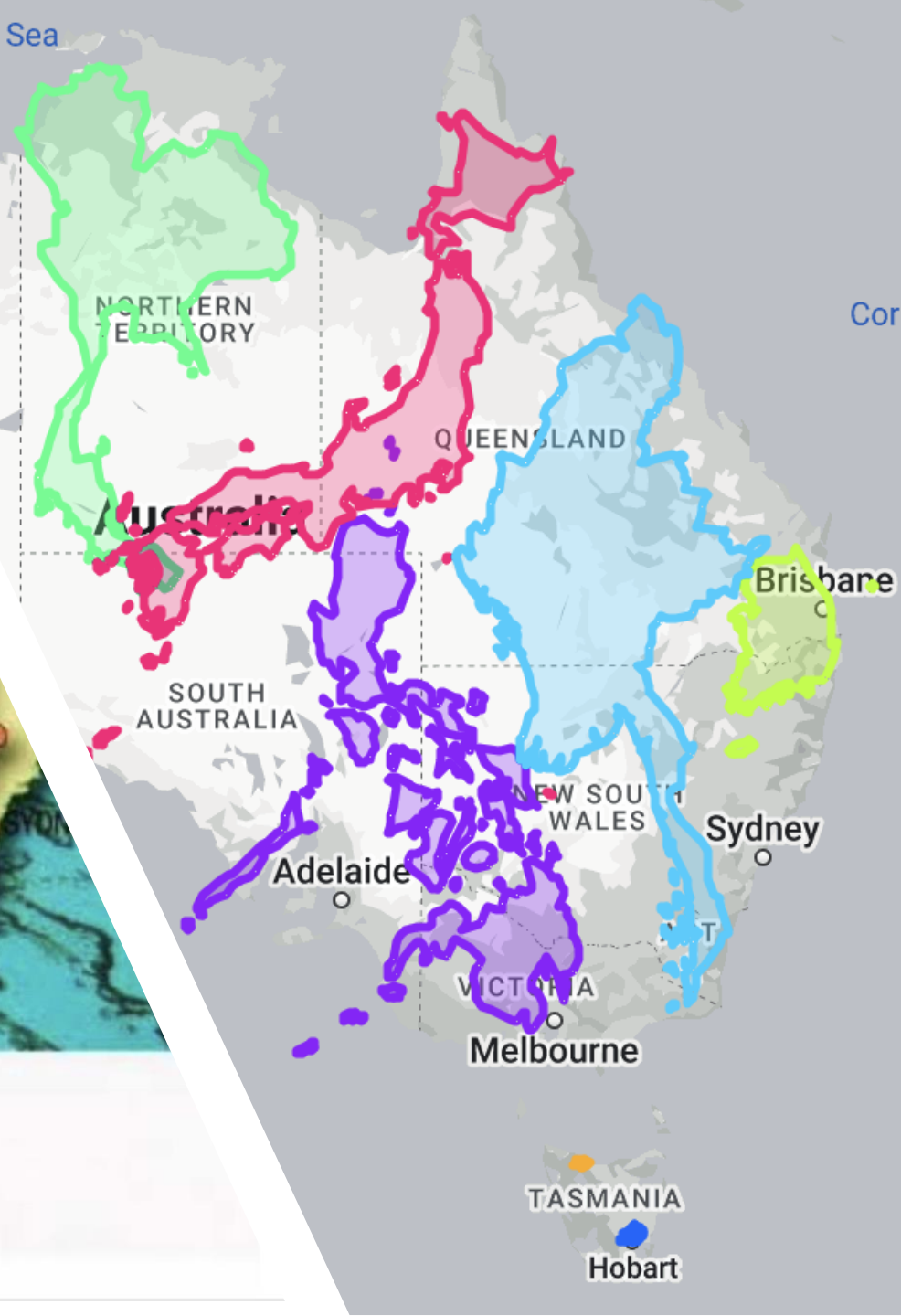


366K
8m
3000 km
2000 mi

 The **Fleet Operations Solution** you need to monitor, plan and report with confidence [LEARN MORE](#)



Timor Sea

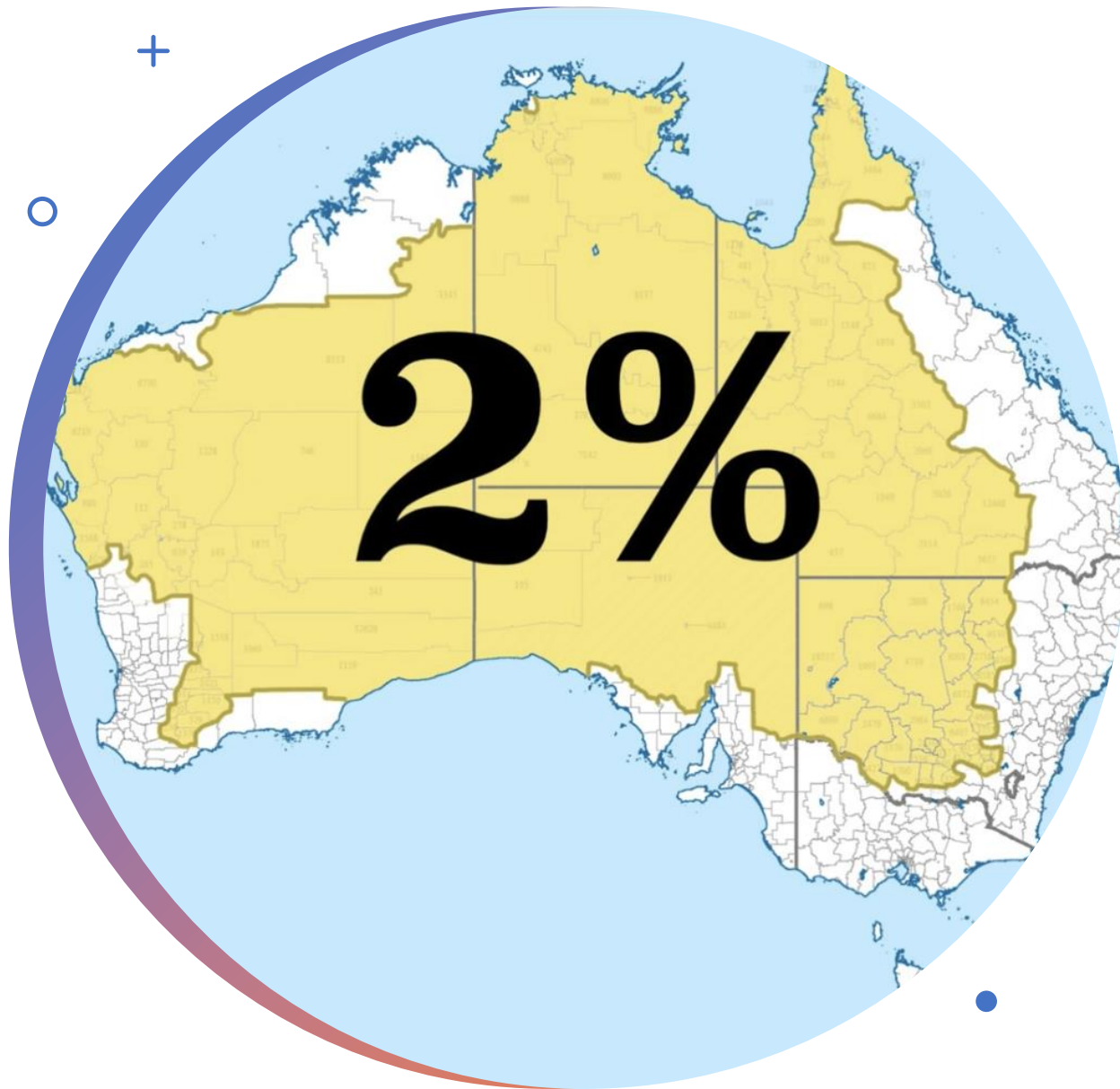


Australia and Europe area comparison

Australia's area: 7.7 million sq km
 Europe's area (shown): 3.5 million sq km

Darwin to Perth 4396 km • Perth to Adelaide 2707 km
 Adelaide to Melbourne 726 km
 Melbourne to Sydney 887 km • Sydney to Brisbane 972 km
 Brisbane to Cairns 1748 km





Only 2% of the population live in the yellow area

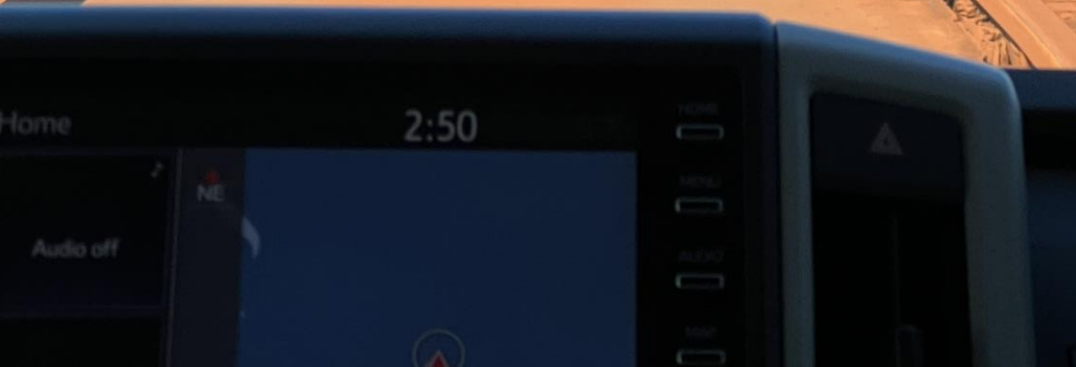
with 98% living on the coast

- 
- 26,515,191 million people live in Australia
 - 368,117,378 million people live in the countries of the East Asia region
 - Australia's coastline 59,736 kms
 - Australia had 27,546 port Arrivals in 2022
 - We have over 45 ports that have over 50 vessel arrivals per annum
 - MtS has 28 Centres and two chaplaincies
 - Seafarer visits – over 25,000 in 2022
Many more prior to this



- Centres
- Planned Centres
- Support Available

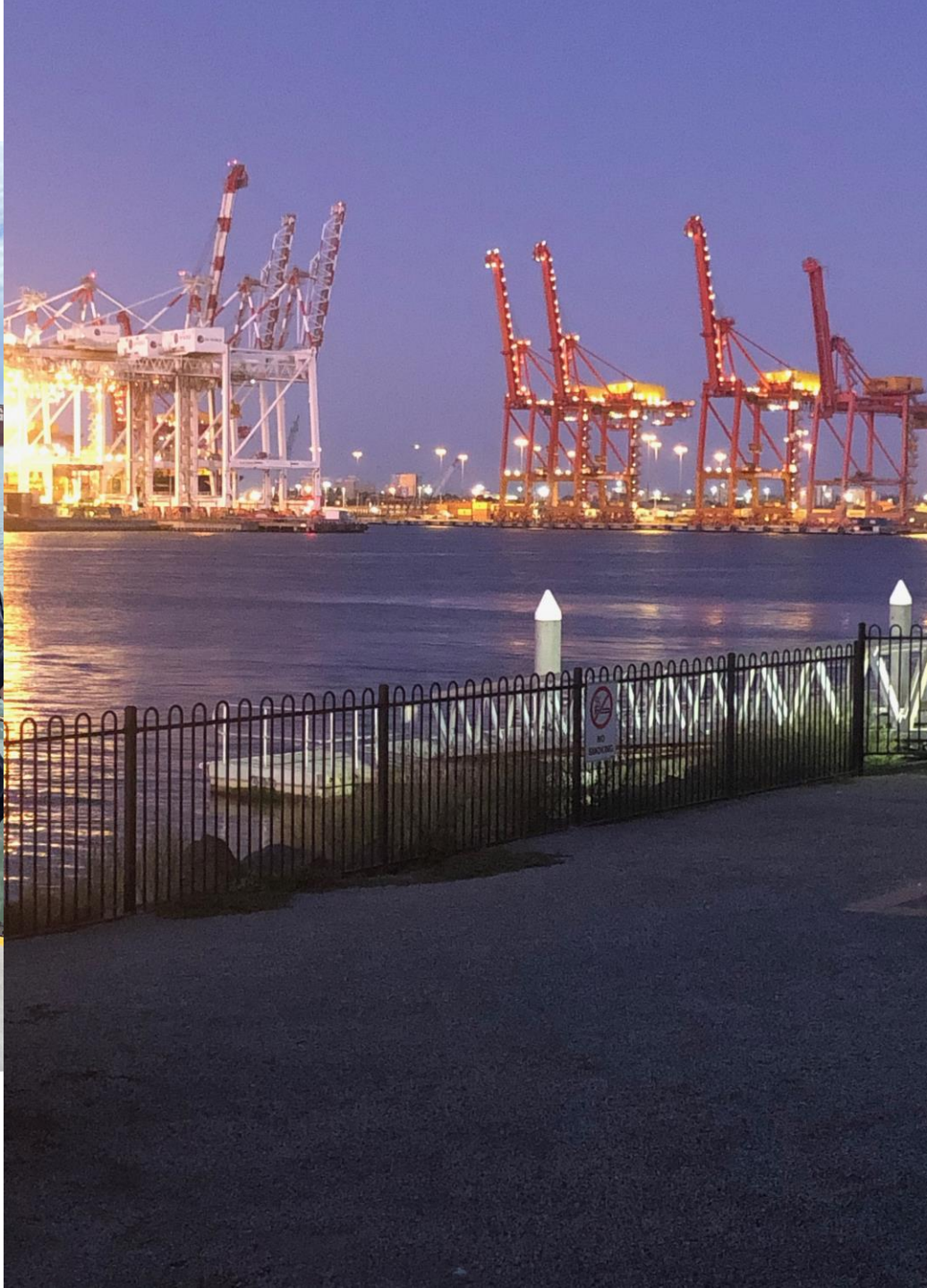






HASTINGS SEAFARERS CENTRE





DYNAMIC VISUAL



STILL WAITING ON GOOD QUALITY LOGO ARTWORK FOR:
BAPTIST CHURCH, AMWS,



THE SEAFARERS CENTRE +61 2 4961 5007



Newcastle



Port Latta

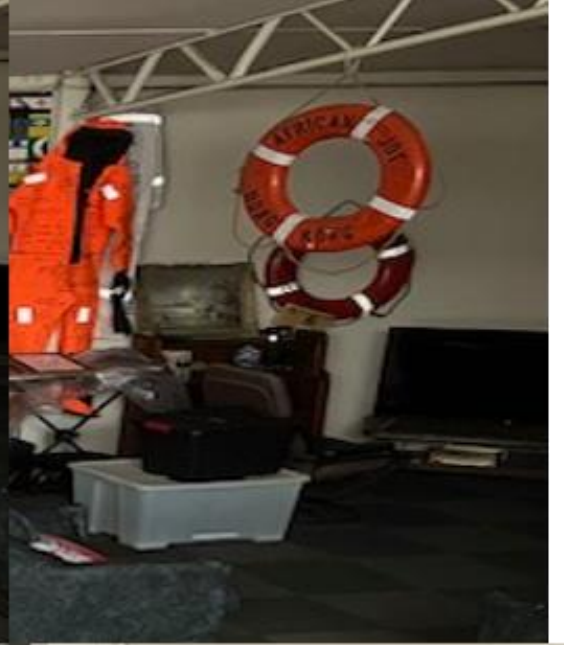






GRANGE
RESOURCES

PORT LATTA
OPERATIONS



Portland

Australian Seafarer Welfare Council

Established in 2013 – ensure adequacy of existing welfare facilities

Support and promote seafarer welfare

Representatives from 11 maritime organisations around Australia



Meet 3 times a year

Member of the International Seafarers' Welfare Assistance Network (ISWAN)

AUSTRALIAN
SEAFARERS'
WELFARE
COUNCIL

Seafarer Welfare Organizations

Bringing them together through the Australian Seafarer Welfare Council

Stella Maris, Australia 

Australian Mariners Welfare Society 

Australian Transport Safety Bureau 
Australian Government
Australian Transport Safety Bureau

Hunterlink Employee Assistance Provider 

International Transport Federation 

Australian Maritime Safety Authority 
Australian Government
Australian Maritime Safety Authority

Maritime Industry Australia Limited 

Mission to Seafarers 

Ports Australia 



Shipping Australia Limited 

RightShip 

Cruise Lines International Association 

Human Rights At Sea 

Tas Bull Seafarers Foundation 

 Members
 Observers



Current seafarer welfare services funding

Unsustainable funding streams:

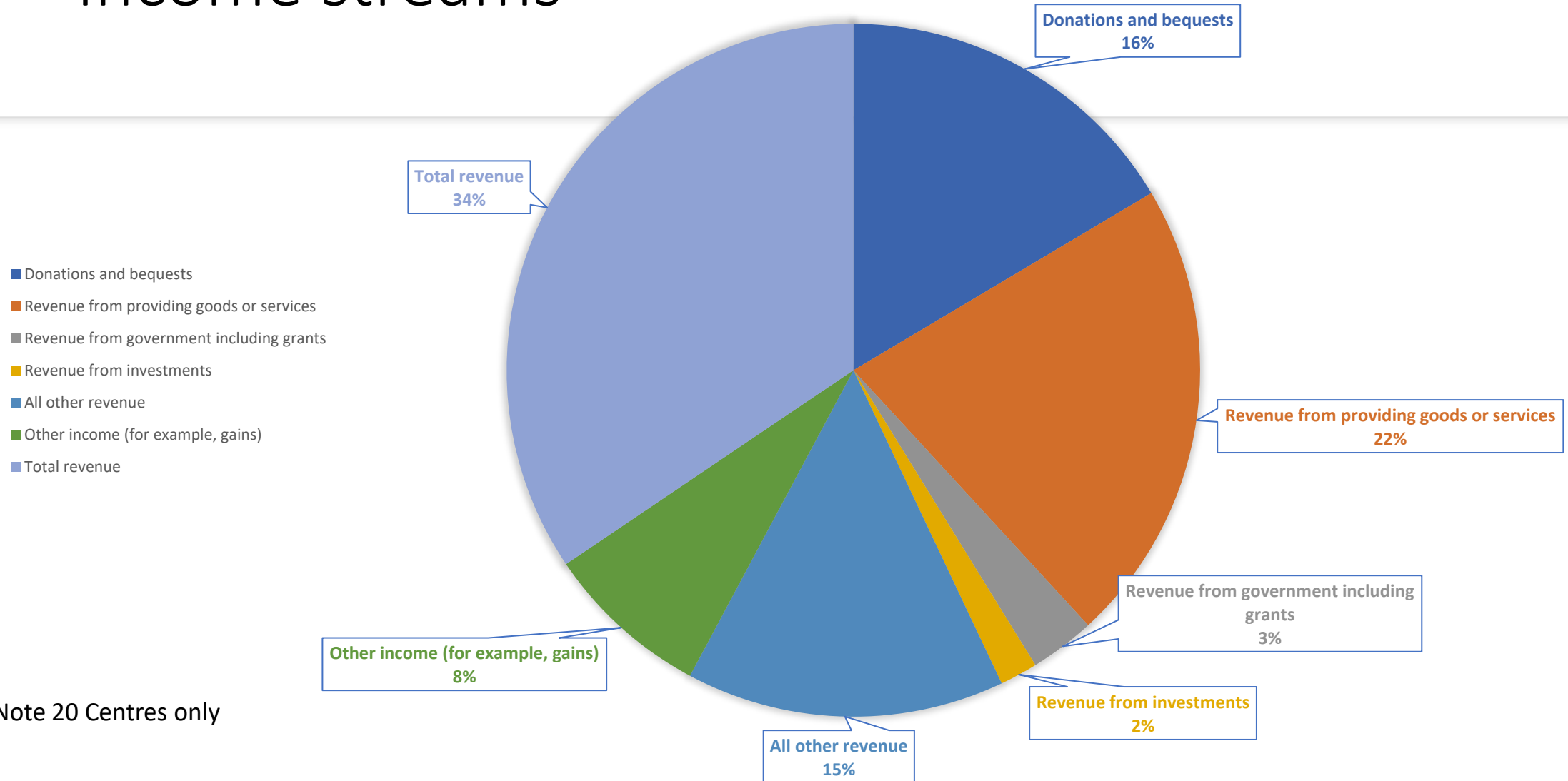
- Local community grants
- In kind donations
- Fundraising activities
- COVID-19 put further financial pressure

No direct recurrent Commonwealth, State Government or Port funding



Income streams

REVENUE 2022 - \$8,382,580



Note 20 Centres only



NEW Project – Papua New Guinea

Goals

Build the network

Re-establish PNG networks

Bring EVERYONE along on the journey to provide for sustainable welfare services



