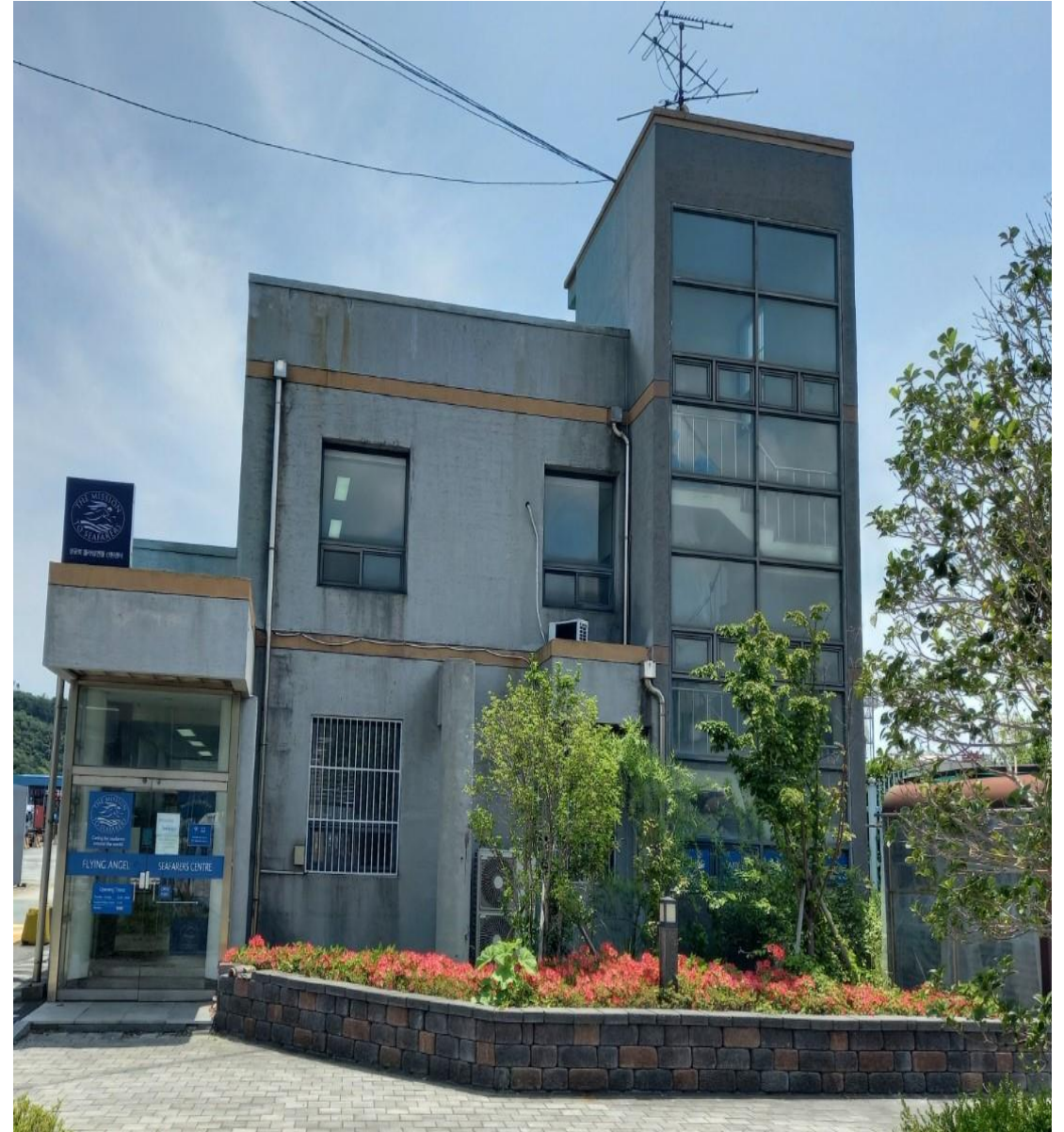


The Mission to Seafarers Busan



Busan New Port -25 berths



Open
2024(3berths)

Open 2026(2
berths)

Open 2022. 7(3berths)

North Port in Busan Port

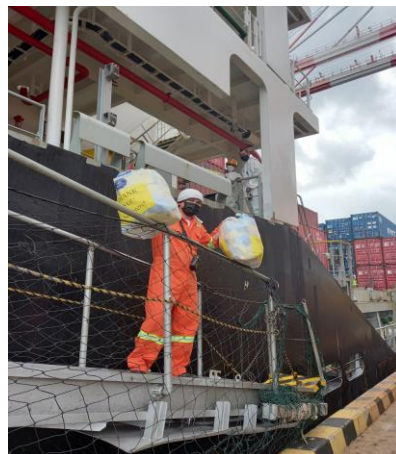
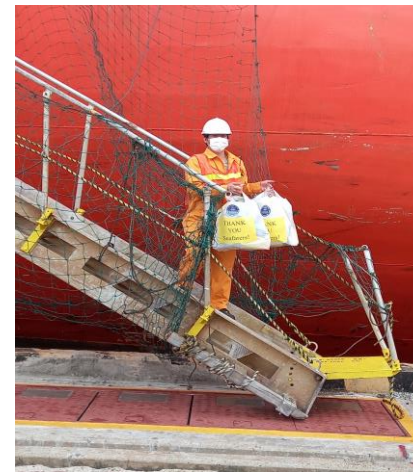
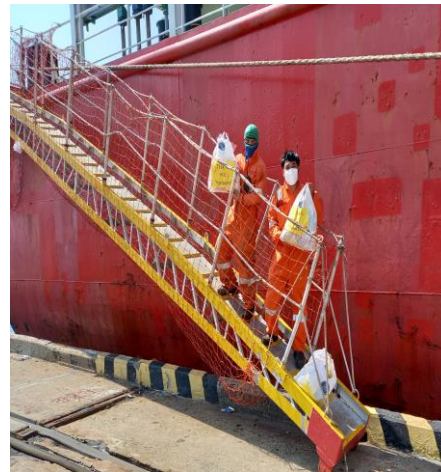


Contents

1. What we have done during Covid-19
2. Difficulties- Visiting Ministry
3. How to enhance MtS Busan's presence and how to extend our ministry in the maritime industry in Busan

What we have done during Covid-19

1. Care packages during covid-19: about 108 ships- approximately 2,160 seafarers



2. Support 12 Kiribati seafarers (July to Nov. 2021)



3. Christmas parcels for 3 years: 900 seafarers



Difficulties after Covid-19

No permission for
Ship visiting



In front of the gangway
visiting



How to enhance of the MtS Busan presence and extend our work in future

Project 1

Improve the Center's environment and develop services for seafarers such as providing transport to a shopping mall from the Center

Project 2

Open Seafarers' Counseling in 2024 → extends counselling service to shipping companies in 2025-2026



-감사합니다-
Gamsahapmida